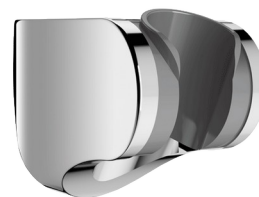


Wall-mounted tilting support for shower heads

Ref. 845

Chrome-plated



DESCRIPTION

Wall-mounted tilting support for shower heads - [Ref. 845](#)

Chrome-plated, tilting, wall-mounted support for shower heads with fixings supplied.
30-year warranty.

ADVANTAGES



Easy to install

TECHNICAL CHARACTERISTICS

Wall-mounted tilting support for shower heads - [Ref. 845](#)

Height	55mm
Depth	65mm
Finish	Chrome-plated
Warranty	