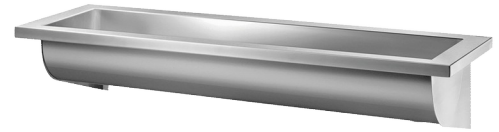


CANAL wall-mounted wash trough

Ref. 120300

Polished satin 304 stainless steel - L. 2400mm



DESCRIPTION

CANAL wall-mounted wash trough - Ref. 120300

Wall-mounted wash trough for wall-mounting, for 4 services - 2,400mm
Bacteriostatic 304 stainless steel.

Polished satin finish.

Stainless steel thickness: 0.8mm for the bowl, 1.5mm for surround and fixing brackets.

Easy to install: no joint concealers to install, lightweight trough.

Water control can be wall-mounted or deck-mounted.

Drainage on the right.

Without tap hole.

Supplied with 1½" waste. Without overflow.

Supplied with fixing elements.

CE marked. Complies with European standard EN 14296.

Weight: 13kg.

30-year warranty.

Possible to add a bacteriostatic 304 stainless steel splashback (ref. 100300).

[Formerly ref: 0211300015]

ADVANTAGES



Bacteriostatic 304 stainless steel, smooth surface

TECHNICAL CHARACTERISTICS

CANAL wall-mounted wash trough - Ref. 120300

Height	250mm
Length	2400mm
Width	400mm
Thickness	1mm (basin) et 1.5mm (edge and fixing brackets)
Finish	304 polished satin stainless steel
Norms	
Warranty	

