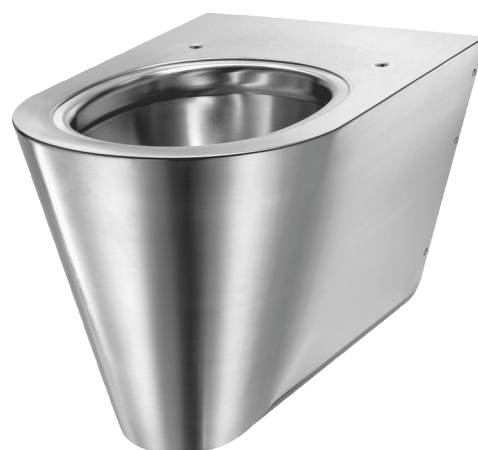


## Wall-hung S21 S WC pan

Ref. 110310

Polished satin 304 stainless steel



### DESCRIPTION

Wall-hung S21 S WC pan - Ref. 110310

Wall-hung WC pan, 360 x 350 x 535mm.  
 Compatible with all standard frame systems available on the market.  
 Elegant and simple design.  
 Bacteriostatic 304 stainless steel.  
 Polished satin finish.  
 Stainless steel thickness: 1.5mm.  
 One-piece pressed WC bowl, seam-free for easy maintenance and better hygiene.  
 WC bowl surface is polished with rounded edges for easy cleaning. Concealed perimetral flushing rim.  
 Horizontal water inlet: Ø 55mm.  
 Horizontal waste outlet: Ø 100mm.  
 Water saving: works with 4L or more of water.  
 Shrouded pan.  
 Pre-drilled holes for fixing the toilet seat. Supplied with stainless steel blanking caps when installed without toilet seat lid.  
 Quick and easy to install from the front thanks to a stainless steel mounting frame.  
 Supplied with fixing plate and 6 theft prevention TORX security screws.  
 CE marked. Complies with European standard EN 997 for 4L flush.  
 Weight: 11kg.  
 30-year warranty.  
 [Formerly ref: 0112030001]

### ADVANTAGES



Bacteriostatic 304 stainless steel



Polished bowl surface



Elegant and simple design

### TECHNICAL CHARACTERISTICS

Wall-hung S21 S WC pan - Ref. 110310

|           |   |
|-----------|---|
| Height    | 350mm   |
| Length    | 535mm   |
| Width     | 360mm   |
| Thickness | 1.5mm   |
| Finish    | 304 polished satin stainless steel  |
| Norms     |   |
| Warranty  |    |

