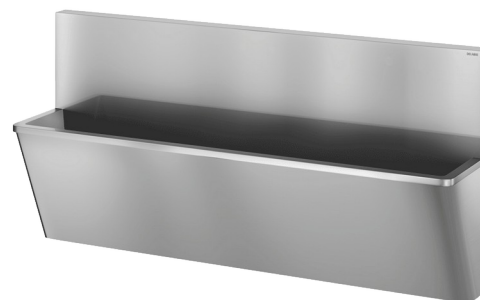


## Surgical scrub-up trough with high upstand

Ref. 187000

Polished satin 304 stainless steel - 3 services - "Hygiene+" Design



### DESCRIPTION

**Surgical scrub-up trough with high upstand - Ref. 187000**

Wall-mounted surgical scrub-up trough with 450mm upstand. Suitable for hospitals and healthcare facilities. Bacteriostatic 304 stainless steel. Polished satin finish. Stainless steel thickness: 1.2mm. Length 2,100mm, 3 services. Without tap hole. Smooth surface and rounded inside edges for easy cleaning. "Hygiene+" design: reduces niches where bacteria can develop, concealed trap, easy to clean. Drainage on the right. Without overflow. Supplied with fixing elements and 1"1/4 waste. CE marked. Complies with norm EN 14296. Weight: 48.5kg. 30-year warranty.

### TECHNICAL CHARACTERISTICS

**Surgical scrub-up trough with high upstand - Ref. 187000**

Height	1020mm
Length	2,100mm
Width	475mm
Thickness	1.2mm
Finish	Polished satin 304 stainless steel
Norms	 
Warranty	

### ADVANTAGES



Bacteriostatic 304 stainless steel

