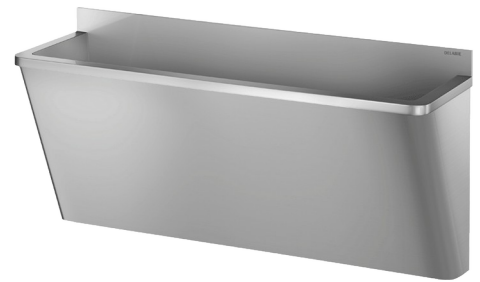


Surgical scrub-up trough with low upstand

Ref. 186020

Polished satin 304 stainless steel - 2 services - "Hygiene+" Design



DESCRIPTION

Surgical scrub-up trough with low upstand - Ref. 186020

Wall-mounted surgical scrub-up trough with 75mm upstand. Suitable for hospitals and healthcare facilities. Bacteriostatic 304 stainless steel. Polished satin finish. Stainless steel thickness: 1.2mm. Length 1,400mm, 2 services. Without tap hole. Smooth surface and rounded inside edges for easy cleaning. "Hygiene+": reduces niches where bacteria can develop, concealed trap, easy to clean. Drainage on the right. Without overflow. Supplied with fixing elements and 1"1/4 waste. CE marked. Complies with norm EN 14296. Weight: 26.6kg. 30-year warranty.

ADVANTAGES



Bacteriostatic 304 stainless steel

TECHNICAL CHARACTERISTICS

Surgical scrub-up trough with low upstand - Ref. 186020

Height	645mm
Length	1400mm
Width	400mm
Thickness	1.2mm
Finish	Polished satin 304 stainless steel
Norms	 
Warranty	

