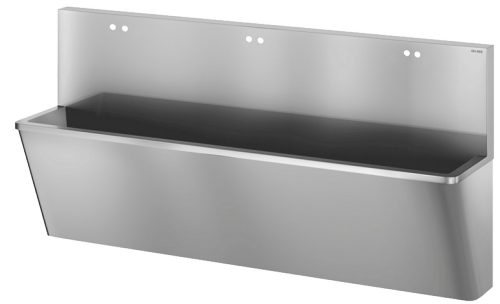


## Surgical scrub-up trough with high upstand

Ref. 187200

Polished satin 304 stainless steel - 3 services - "Hygiene+" Design



### DESCRIPTION

**Surgical scrub-up trough with high upstand - Ref. 187200**

Wall-mounted surgical scrub-up trough with 450mm upstand. Suitable for hospitals and healthcare facilities. Bacteriostatic 304 stainless steel. Polished satin finish. Stainless steel thickness: 1.2mm. Length 2,100mm, 3 services. With twin tap holes  $\varnothing$  22mm with 150mm centres per service. Smooth surface and rounded inside edges for easy cleaning. "Hygiene+" design: reduces niches where bacteria can develop. Drainage on the right. Without overflow. Supplied with fixing elements and 1"1/4 waste. CE marked. Complies with norm EN 14296. Weight: 48.5kg. 30-year warranty.

### ADVANTAGES



Bacteriostatic 304 stainless steel

### TECHNICAL CHARACTERISTICS

**Surgical scrub-up trough with high upstand - Ref. 187200**

|           |                                                                                        |
|-----------|----------------------------------------------------------------------------------------|
| Height    | 1020mm                                                                                 |
| Length    | 2100mm                                                                                 |
| Width     | 475mm                                                                                  |
| Thickness | 1.2mm                                                                                  |
| Finish    | Polished satin 304 stainless steel                                                     |
| Norms     | CE  |
| Warranty  |     |

