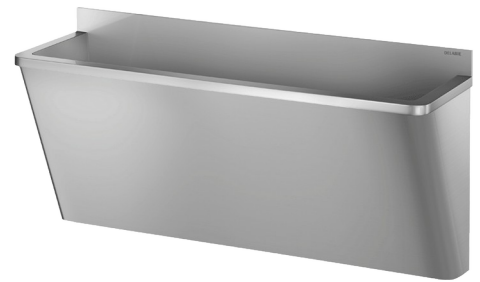


Surgical scrub-up trough with low upstand

Ref. 18602015

Polished satin 304 stainless steel - 2 services - L. 1,600mm



DESCRIPTION

Surgical scrub-up trough with low upstand - Ref. 18602015

Wall-mounted surgical scrub-up trough with 75mm upstand.
 Suitable for hospitals and care facilities.
 Complies with the former HTM64 guidance and new Health Building Note 00-10: Part C - Sanitary Assemblies.
 Length 1,600mm, 2 services. Without tap hole.
 Bacteriostatic 304 stainless steel. Polished satin finish. Stainless steel thickness: 1.2mm.
 Smooth surface and rounded edges for easy cleaning.
 "Hygiene +" design: reduces bacterial niches, concealed trap, easy to clean.
 Drainage on the right.
 Without overflow.
 Supplied with fixing elements.
 CE marked. Complies with norm EN 14296.
 Weight: 29.8kg.
 30-year warranty.

ADVANTAGES



Bacteriostatic 304 stainless steel

TECHNICAL CHARACTERISTICS

Surgical scrub-up trough with low upstand - Ref. 18602015

| | |
|-----------|---|
| Height | 645mm |
| Length | 1600mm |
| Width | 400mm |
| Thickness | 1.2mm |
| Finish | Polished satin 304 stainless steel |
| Norms |  |
| Warranty |  |

