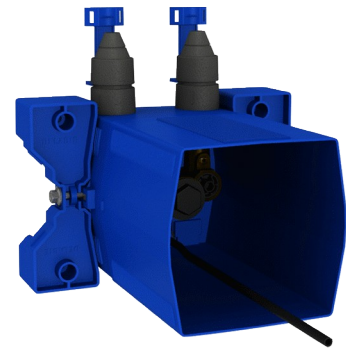


## Recessed waterproof housing for TEMPOMIX 3 basin controls

Ref. 794BOX3

Waterproof, kit 1/2



### DESCRIPTION




Recessed waterproof housing for TEMPOMIX 3 basin controls - Ref. 794BOX3

Waterproof recessed housing for TEMPOMIX 3 basin water controls, kit 1/2:

- Collar with waterproof seal.
  - Hydraulic connection from the outside and maintenance from the front.
  - Adjusts to all types of installations (rails, solid walls, panels).
  - Compatible with wall finishes 10 - 120mm (while maintaining the minimum recessing depth of 93mm).
  - Suitable for standard or "pipe in pipe" supply.
  - Stopcocks and flow rate adjustment, filters, non-return valves and cartridge are all integrated and accessible from the front.
  - TEMPOMIX 3 single control mixer F $\frac{1}{2}$ ".
  - Supplied in 2 kits: secure system flush without sensitive elements.
- 30-year warranty.  
Order with control plates references 794200 or 794250.

### TECHNICAL CHARACTERISTICS

Recessed waterproof housing for TEMPOMIX 3 basin controls - Ref. 794BOX3

Connector	F $\frac{1}{2}$ "
Technology	Time flow
Height	150mm
Depth	93 - 190mm
Width	160mm
Spout length	110mm
Flow rate	3 lpm
Norms	ACS  
Warranty	

### ADVANTAGES



Installation recessed in wall



Waterproof housing is adjustable and modular



100% waterproof housing

