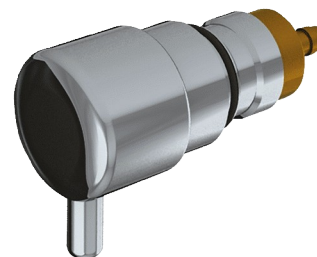


## Cartridge with push-button and spout

Ref. 729303

For wall-mounted soap dispensers 729150 and 729200



### DESCRIPTION

Cartridge with push-button and spout - Ref. 729303

Cartridge for wall-mounted soap dispensers.  
Push-button and spout in chrome-plated brass.  
Compatible with soap dispensers 729150 and 729200.

### ADVANTAGES



Easy to maintain

### TECHNICAL CHARACTERISTICS

Cartridge with push-button and spout - Ref. 729303

Spout length	32mm
Diameter	Ø 34mm
Finish	Spout in chrome-plated brass

