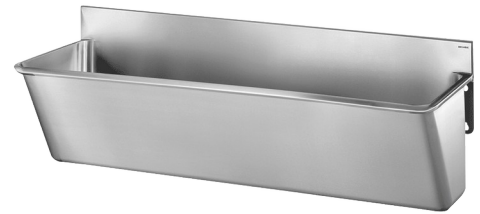


Surgical scrub up trough with low splashback

Ref. 182020

Polished satin 304 stainless steel - 2 services

2025 UK public price excluding VAT: **£1,792.76**



DESCRIPTION

Surgical scrub up trough with low splashback - Ref. 182020

Wall-mounted surgical scrub up trough with splashback 75mm. Suitable for hospitals and healthcare facilities. Bacteriostatic 304 stainless steel. Polished satin finish. Stainless steel thickness: 1.2mm. L. 1,400mm, 2 services. With no tap hole. Smooth surface and rounded inside edges for easy cleaning. Drainage on the right. Without overflow. Supplied with fixing elements. CE marked. Complies with norm EN 14296. Weight: 18.8kg. 30-year warranty.

ADVANTAGES



Bacteriostatic 304 stainless steel

TECHNICAL CHARACTERISTICS

Surgical scrub up trough with low splashback - Ref. 182020

Height	440mm
Length	1400mm
Width	455mm
Thickness	1.2mm
Finish	304 polished satin stainless steel
Norms	 
Warranty	

