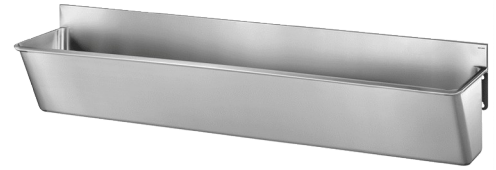


Surgical scrub up trough with low splashback

Ref. 183020

Polished satin 304 stainless steel - 3 services

2024 UK public price excluding VAT: £1,826.62



DESCRIPTION

Surgical scrub up trough with low splashback - Ref. 183020

Wall-mounted surgical scrub up trough with splashback 75mm. Suitable for hospitals and healthcare facilities. Bacteriostatic 304 stainless steel. Polished satin finish. Stainless steel thickness: 1.2mm. L. 2,100mm, 3 services, with no tap holes. Smooth surface and rounded inside edges for easy cleaning. Drainage on the right. Without overflow. Supplied with fixing elements. CE marked. Complies with norm EN 14296. Weight: 27kg. 30-year warranty.

ADVANTAGES



Bacteriostatic 304 stainless steel

TECHNICAL CHARACTERISTICS

Surgical scrub up trough with low splashback - Ref. 183020

Height	465mm
Length	2100mm
Width	455mm
Thickness	1.2mm
Finish	304 polished satin stainless steel
Norms	
Warranty	

