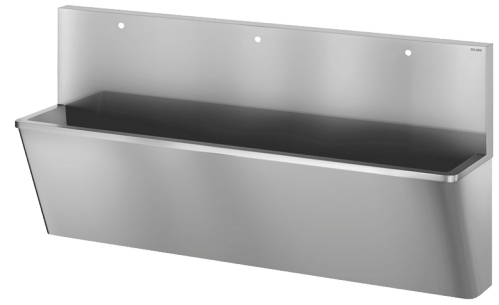


# Surgical scrub-up trough with high upstand

Ref. 187100

Polished satin 304 stainless steel - 3 services - "Hygiene+" Design

2025 UK public price excluding VAT: £2,760.83



## DESCRIPTION

**Surgical scrub-up trough with high upstand - Ref. 187100**

Wall-mounted surgical scrub-up trough with 450mm upstand. Suitable for hospitals and healthcare facilities. Bacteriostatic 304 stainless steel. Polished satin finish. Stainless steel thickness: 1.2mm. Length 2,100mm, 3 services. With 3 tap holes Ø 22mm. Smooth surface and rounded inside edges for easy cleaning. "Hygiene+" design: reduces niches where bacteria can develop, concealed trap, easy to clean. Drainage on the right. Without overflow. Supplied with fixing elements and 1"1/4 waste. CE marked. Complies with norm EN 14296. Weight: 48.5kg. 30-year warranty.

## ADVANTAGES



Bacteriostatic 304 stainless steel

## TECHNICAL CHARACTERISTICS

**Surgical scrub-up trough with high upstand - Ref. 187100**

Height	1020mm
Length	2100mm
Width	475mm
Thickness	1.2mm
Finish	Polished satin 304 stainless steel
Norms	CE 
Warranty	

