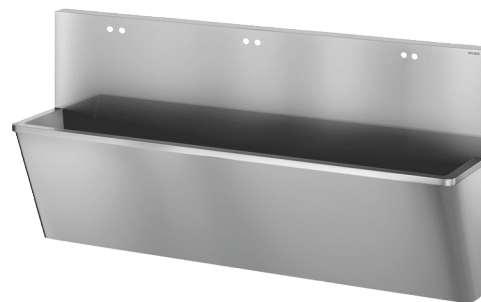


Surgical scrub-up trough with high upstand

Ref. 187200

Polished satin 304 stainless steel - 3 services - "Hygiene+" Design

2024 UK public price excluding VAT: £2,680.41



DESCRIPTION

Surgical scrub-up trough with high upstand - Ref. 187200

Wall-mounted surgical scrub-up trough with 450mm upstand. Suitable for hospitals and healthcare facilities. Bacteriostatic 304 stainless steel. Polished satin finish. Stainless steel thickness: 1.2mm. Length 2,100mm, 3 services. With twin tap holes Ø 22mm with 150mm centres per service. Smooth surface and rounded inside edges for easy cleaning. "Hygiene+" design: reduces niches where bacteria can develop. Drainage on the right. Without overflow. Supplied with fixing elements. CE marked. Complies with norm EN 14296. Weight: 48.5kg. 30-year warranty.

ADVANTAGES



Bacteriostatic 304 stainless steel

TECHNICAL CHARACTERISTICS

Surgical scrub-up trough with high upstand - Ref. 187200

Height	1020mm
Length	2100mm
Width	475mm
Thickness	1.2mm
Finish	Polished satin 304 stainless steel
Norms	
Warranty	

