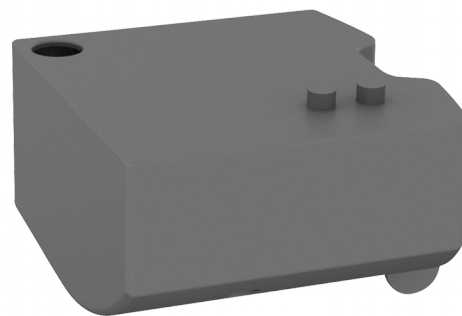


Removable drip tray

Ref. 510624RC

Drip tray for SPEEDJET 2 anthracite - 510624C

2024 UK public price excluding VAT: £84.55






DESCRIPTION

Removable drip tray - Ref. 510624RC

Metallised anthracite drip tray.
Removable drip tray prevents any water dripping onto the wall or floor.
For anthracite SPEEDJET 2 reference 510624C.
Dimensions: 108 x 115 x 61mm.

ADVANTAGES

-  Prevents water dripping onto the wall or floor
-  Easy to maintain
-  Removable: easy to clean and maintain

TECHNICAL CHARACTERISTICS

Removable drip tray - Ref. 510624RC

Height	61mm
Length	111,5mm
Width	108mm
Finish	Metallised anthracite

