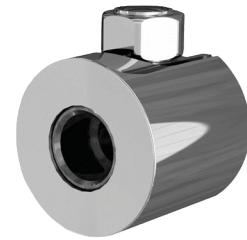


Reinforced exposed union

Ref. 841215

For TEMPOMATIC 3 & 4

2024 UK public price excluding VAT: £49.14



DESCRIPTION

Reinforced exposed union - Ref. 841215

Reinforced exposed union.
 Supplied with sleek concealment plate.
 Recommended for the installation of TEMPOMATIC 3 or TEMPOMATIC 4 wall-mounted basin taps with exposed supply.
 30-year warranty.

ADVANTAGES



Reinforced union



Sleek concealment



Compatibility: TEMPOMATIC 3 and TEMPOMATIC 4

TECHNICAL CHARACTERISTICS

Reinforced exposed union - Ref. 841215

Connector	1/2"
Length	47mm
Diameter	Ø 51mm
Warranty	